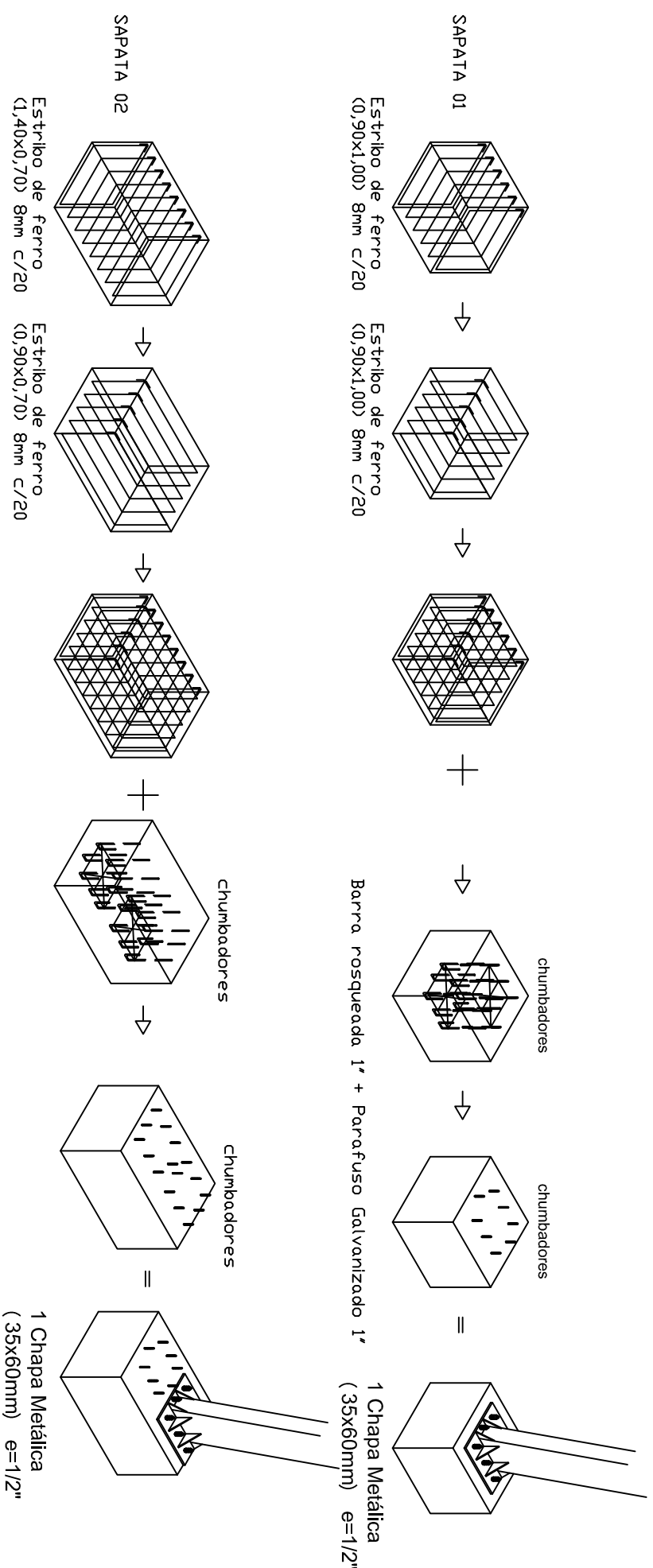
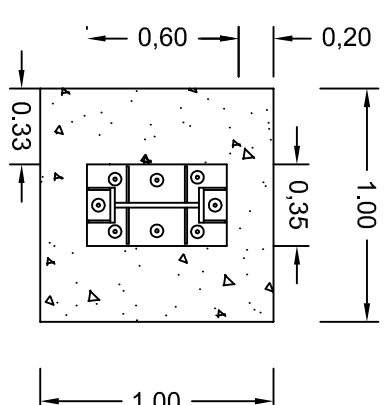


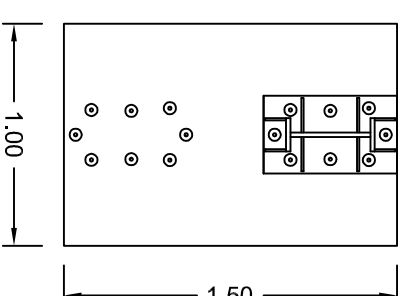
PROJETO FUNDAÇÕES
ESCALA: 1/100





Vista Superior Sapata 1



Vista Superior Sapata 2



 <div> <p>REPÚBLICA FEDERATIVA DO BRASIL</p> <p>ESTADO DO RIO GRANDE DO SUL</p> <p>PREFEITURA MUNICIPAL DE SOBRADINHO</p> </div> 	
<p>OBRA: PROJETO RUA COBERTA</p> <p>LOCAL: RUA JOÃO ANTÔNIO, CENTRO, SOBRADINHO/RS</p>	
<p>PREFEITO MUNICIPAL:</p> <p>_____</p> <p>LUIZ AFFONSO TREVISAN</p>	<p>ÁREA TOTAL:</p> <p>509,74m²</p>
<p>RESP. PROJETO:</p> <p>_____</p> <p>EDGAR FERNANDO SCHULTZ - CREA 89435</p>	<p>ESCALA:</p> <p>INDICADA</p>
<p>DESCRIÇÃO:</p> <p>PROJETO FUNDAÇÕES</p>	<p>DESENHO:</p> <p>BRUNA TEIXEIRA</p> <p>DATA: 11/01/2019</p> <p>PRANCHA: 05</p>