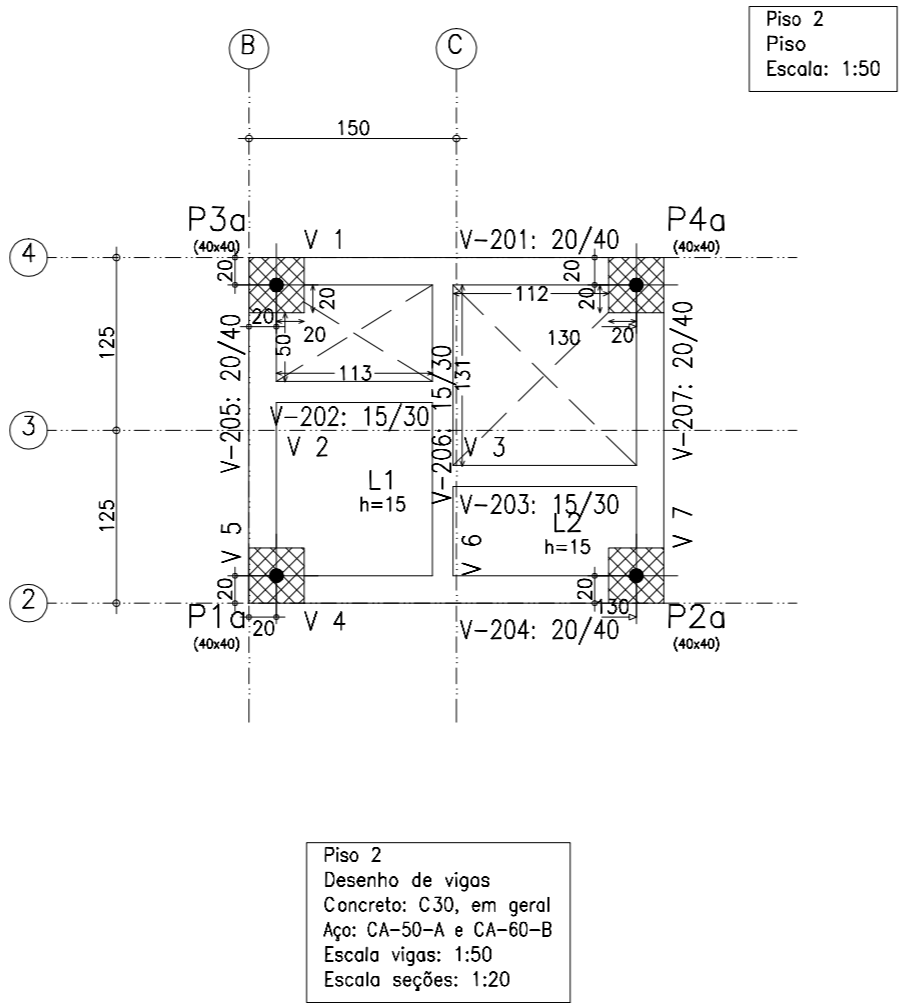
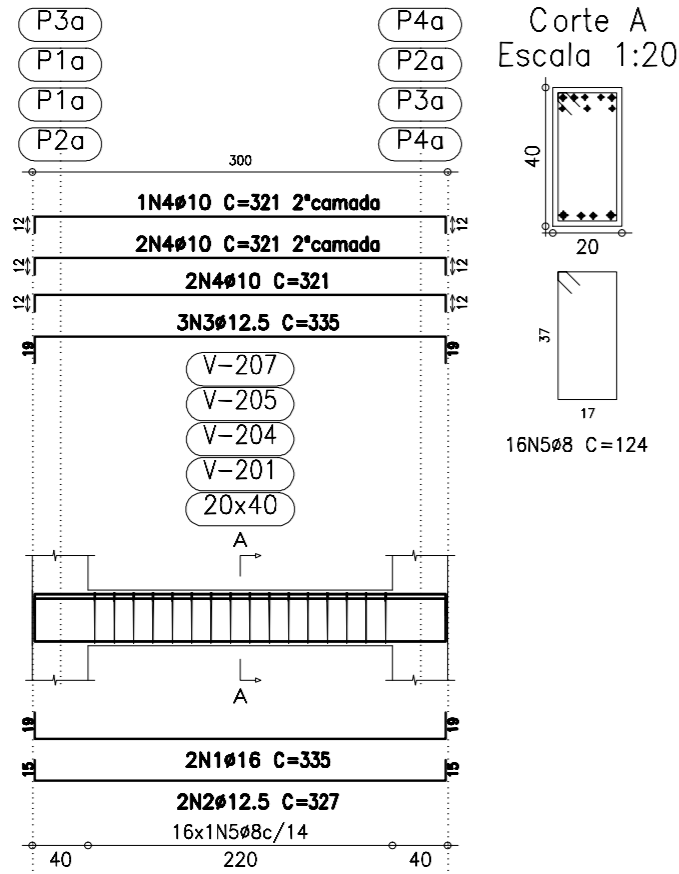


V 1  
V 4  
V 5  
V 7  
Escala 1:50

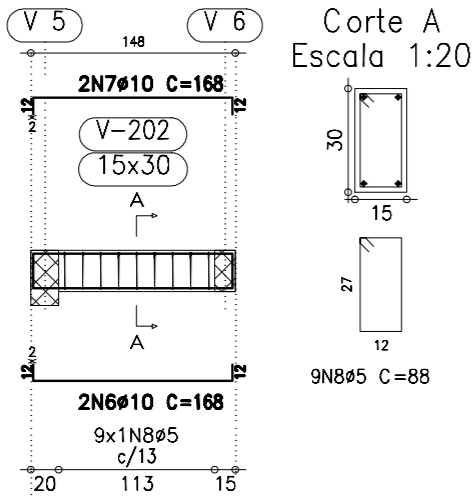


Elemento	Pos.	Diam.	Q.	Dob. (cm)	Reta (cm)	Dob. (cm)	Comp. (cm)	Total (cm)	CA-50-A (kg)	CA-60-B (kg)
V 1=V 4=V 5=V 7	1	ø16	2	19	297	19	335	670	10.5	
	2	ø12.5	2	15	297	15	327	654	6.4	
	3	ø12.5	3	19	297	19	335	1005	9.9	
	4	ø10	5	12	297	12	321	1605	10.1	
	5	ø8	16				124	1984	7.8	
Total+10%:									49.2	
(x4):									196.8	
V 2	6	ø10	2	12	144	12	168	336	2.1	
	7	ø10	2	12	144	12	168	336	2.1	
	8	ø5	9				88	792		1.2
Total+10%:									4.6	1.3
V 3	9	ø10	2	12	164	12	188	376	2.4	
	10	ø10	2	12	164	12	188	376	2.4	
	11	ø5	11				88	968		1.5
Total+10%:									5.3	1.7
V 6	12	ø10	2	12	247	12	271	542	3.4	
	13	ø10	2	12	247		259	518	3.3	
	14	ø5	17				88	1496		2.3
Total+10%:									7.4	2.5
									ø5:	0.0
									ø8:	34.4
									ø10:	61.7
									ø12.5:	71.6
									ø16:	46.4
									Total:	214.1

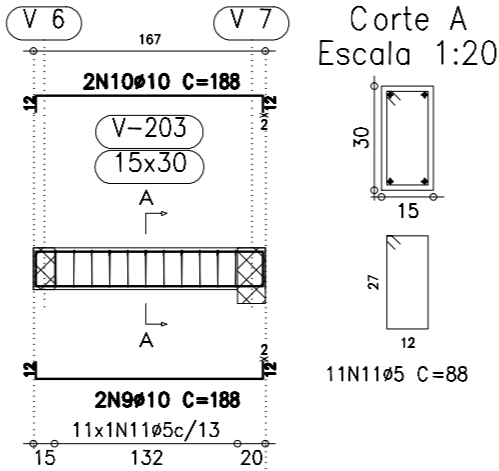
Resumo Aço Piso 2 Vigas	Comp. total (m)	Peso+10% (kg)	Total
CA-50-A ø8	79.4	34	
ø10	89.0	62	
ø12.5	66.4	72	
ø16	26.8	46	214
CA-60-B ø5	32.6	6	6
Total			220

Piso 2 - Superfície total: 5,07 m2			
Elemento	Formas (m2)	Volume (m3)	Barra (kg)
LAJES	2.18	0.33	35
Vigas: fundo	2.25	1.16	220
Forma lateral	7.78		
Pilares (Sup. Formas)	18.40	1.84	188
Total	30.61	3.33	443
Índices (por m2)	6.037	0.657	87.38

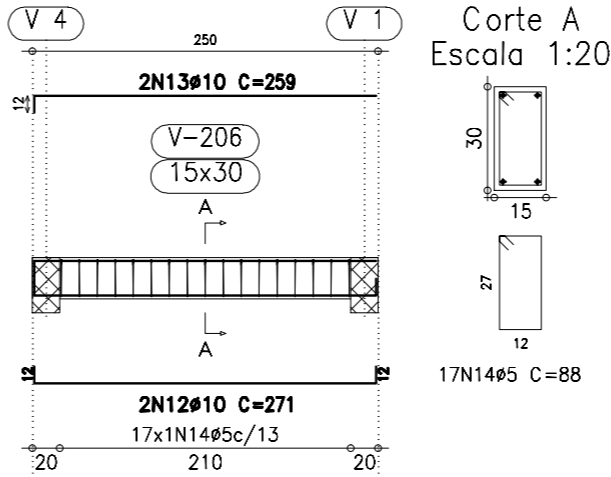
V 2  
Escala 1:50



V 3  
Escala 1:50



V 6  
Escala 1:50



TÍTULO: PROJETO ESTRUTURAL VIGAS PISO 2 a 6 ESTÁTUA CRISTO DE SOBRADINHO			FORMATO: A - 2	
ENDEREÇO: SOBRADINHO - RS			FOLHA: 01/01	
BAIRRO:			LOTE:	
			QUADRA:	
PROPRIETÁRIO: _____				
PREFEITURA MUNICIPAL DE SOBRADINHO				
CONTRATANTE: _____				
PREFEITURA MUNICIPAL DE SOBRADINHO				
R.T.: _____				
JOSÉ LUIZ GONÇALVES CREA MG.: 65.865/D-MG				
ESCALA:	ÁREA DO LOTE:			DATA:
INDICADA	ÁREA DA CONSTRUÇÃO:			FEV. 2022
				JLG